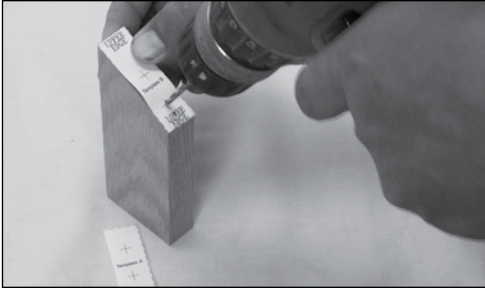


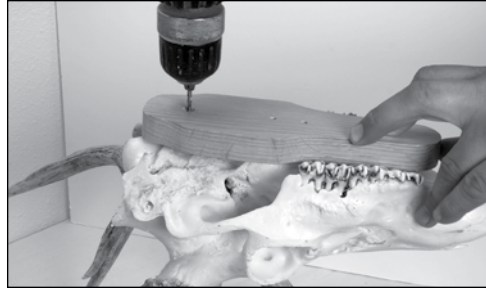
Skull Mount Kit Instructions



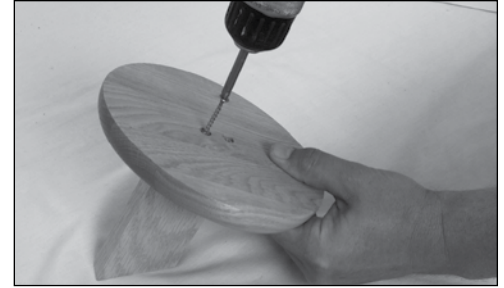
- Includes:**
 1—2" Screw for Assembly
 4—15/8" Screws for Assembly
 2—Small Screws for Hanger
 1—Sawtooth Hanger
 1—Base
 1—Brace
 1—Skull Panel



1. Use provided Templates A & B to predrill the pilot holes in the Brace. Top Face holes should be drilled at a 90° angle.



2. Test fit the skull onto the top panel which should fit between the teeth. Adjust so the top predrilled hole is over the thick bone at the base of the skull. Predrill hole in skull.



3. Attach the Base to the Brace using the provided 1 5/8" screws.

OPTION 1 SHOWN



4. Attach the Skull Panel to the Brace using the provided 15/8" screws.



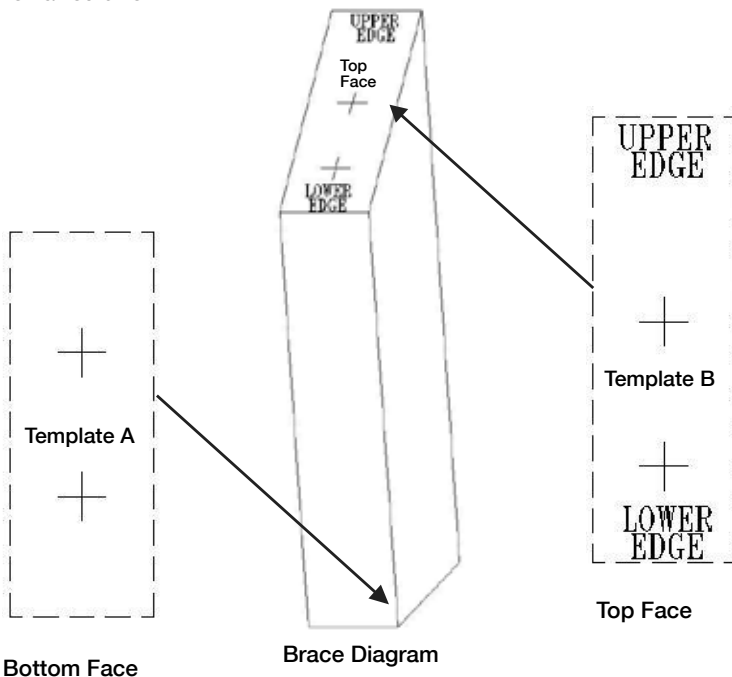
6. Align Skull and panel and attach using the provided 2" screw.

5. Wall Mount Option: To attach the hanger to the back of the Base, mark its location with a pencil and drill pilot holes. Attach using 2 small screws.

CLEANING A DEER SKULL

1. Trim away all flesh and skin. Boil the skull, removing it every 30 minutes to scrape away as much tissue as possible. Keep the antler bases out of the water. However, trim around them with a sharp knife. Use a straightened wire coat hanger to dislodge brain tissue.
2. Bleach will degrade the bone. Instead, buy 40% peroxide from a beauty supply store and pour it into a spray bottle. On a sunny day, swab and spray the skull outside, being careful to keep the liquid off the antlers or they will discolor. Repeat every 30 minutes or so until the bone is completely clean and white. This may take a few afternoons.
3. Glue loose teeth in place. Use wood stain to restore any faded antler color. Let dry.

CUT OUT TEMPLATES



**OPTION 1
PEDESTAL**



**OPTION 2
WALL**