



# Antler Mount Kit Instructions



4/13  
X7609

## Includes:

- 2—Screws for Assembly
- 2—Small Screws for Hanger
- 1—Sawtooth Hanger
- 2—Decorative Tacks
- 1—Gold Cord
- 1—Antler Mount Cover (AMC)
- 1—Oak Crest Plaque

1. To attach the hanger to the back of the plaque, mark its location with a pencil and drill pilot holes. Attach using small screws.



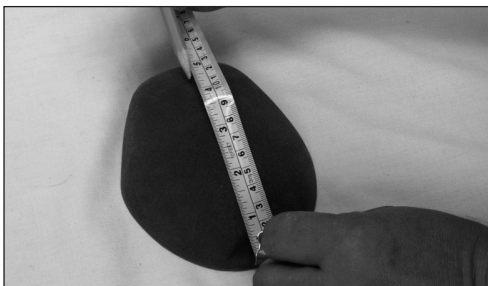
2. Cut the skull as shown. The antler burr should be about 3/8" from the panel.



3. Drill 2 holes through the skull plate.



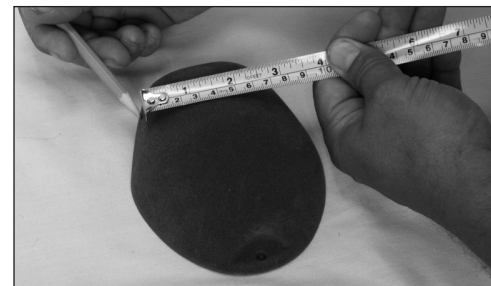
4. Measure 6" up from the panel bottom. Use this measurement to center the skull plate vertically. Center skull horizontally, mark and predrill holes in panel then attach skull using assembly screws.



5. Measure 4.5" from bottom of the AMC. Put small pencil mark at this point on the velvet side in the center from side to side.



6. To determine where to cut AMC, Measure the distance on the skull between the antler bases.



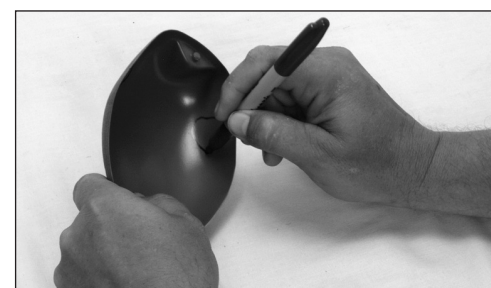
7. Measure across at pencil mark, centering the measurement from step 6.



8. Punch a small hole on each side of the measurement on the velvet side. Turn AMC over and use the holes as reference to draw circles for cutting.



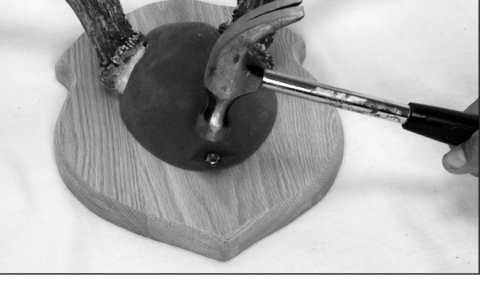
9. Measure the diameter of pedicels below where antler bases attach to skull.



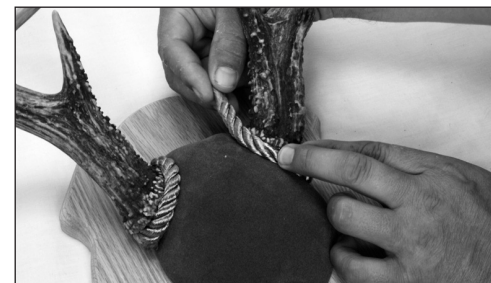
10. With your punched hole as the center, draw a circle around using the measurement from step 9 to determine the size of your holes. Now cut each hole and at the bottom of each hole cut a single slice to open the holes.



11. Try the AMC on the skull. If the AMC doesn't fit flat on panel, further trimming will be needed. Usually cutting the circle larger at bottom is needed.



12. When fitted correctly, nail the two decorative nails in holes provided at top and bottom of AMC. Cover nail with tape to protect finish.



13. Wrap the gold cord around the antler base and tuck ends. Glue the ends behind the antlers using clear or hot glue.

