

DELUXE Antler Photo Display Kit



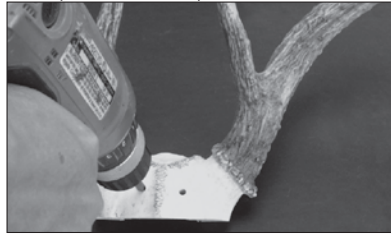
Includes:

- 10.14
X7511
- 2—Screws for Assembly
 - 2—Screws for Hanger
 - 1—Sawtooth Hanger
 - 2—Decorative Tacks
 - 1—Gold Cord
 - 1—Antler Mount Cover (AMC)
 - 1—Oak Panel
 - 1—Adhesive Photo Frame*

Instructions:



2. Cut the skull as shown. The antler burr should be about 3/8" from the panel.



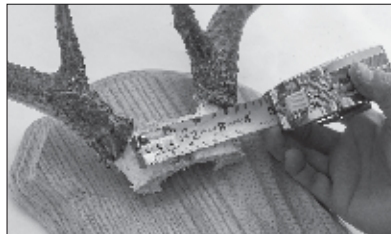
3. Drill 2 holes through the skull plate.



4. Measure 11 1/4" up from the panel bottom. Use this measurement to center the skull plate vertically. Center skull horizontally, mark and predrill holes in panel then attach skull using assembly screws.



5. Measure 5" from bottom of the AMC. Put small pencil mark at this point in the center from side to side.



6. To determine where to cut AMC, Measure the distance on the skull between the antler bases.



7. Measure across at pencil mark, centering the measurement from step 6.



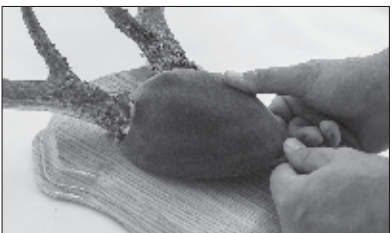
8. Punch a small opening on each side of the measurement. Turn AMC over (face side down) and use the punched openings as reference to draw circles for cutting.



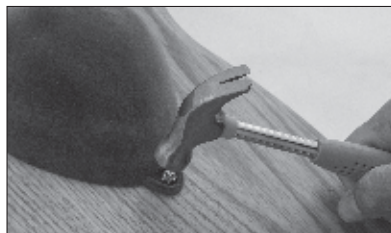
9. Measure the diameter of pedicels below where antler bases attach to skull.



10. With your punched openings as the center, draw circles using the measurements from step 9 to determine the size of your holes. Now cut each hole and at the bottom of each hole cut a single slice to open the holes. Hint: it is better to cut the holes slightly smaller to begin with; if needed, more material can be trimmed in the next step.



11. Try the AMC on the skull. If the AMC doesn't fit flat on the panel, further trimming will be needed. Determine where the AMC is binding around the antler base and trim a small amount of the material away. Repeat the fitting and trimming process until the AMC fits flat on the panel. Trim only small amounts at a time. It is better to fit and trim several times than to trim too much accidentally.

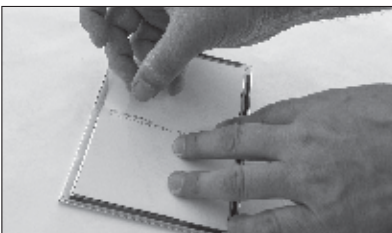


12. When fitted correctly, nail the two decorative tacks in the tab openings provided at top and bottom of AMC. Cover decorative tacks with tape to protect finish while hammering.

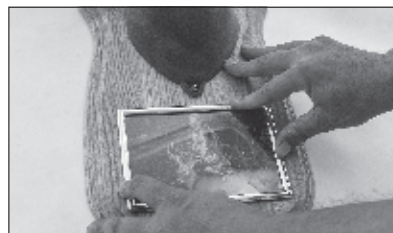


13. Wrap a piece of scotch tape around the gold cord to keep it from fraying when you cut it. Once cut, wrap the gold cord around the antler base and tuck ends. Glue the ends behind the antlers using clear or hot glue.

*Steps 14 and 15 are only for kits that include the gold photo frame.



14. Remove the protective cover from the back of the plexiglass and slide your 4" x 6" photo in utilizing the top opening. Once positioned, a small piece of scotch tape on the top side may be used to hold the photo firmly in place. Now peel away the thin, colored plastic strips that cover the self-adhesive tape on the sides and bottom. Be careful not to pull away the white adhesive tape itself.



15. Without touching the exposed adhesive, carefully lift the frame and position it (adhesive side down) to where you will ultimately place it on the panel. Be sure that it is level and centered, then lower it onto the panel and press firmly to adhere. Peel the protective cover off of the front of the plexiglass.